

Sharpsmart

CORRECT SHARPS DISPOSAL



TO AVOID NEEDLESTICK INJURY, IT IS RECOMMENDED THAT NEEDLES SHOULD NOT BE RE-CAPPED OR DE-NOTCHED AND INTRAVENOUS SPIKES OR NEEDLES SHOULD NOT BE INSERTED INTO ATTACHED PLASTIC TUBING. BE SHARP SMART, AVOID ACTIONS THAT COULD PUT YOUR SAFETY AT RISK.

Sharps are discarded objects or devices capable of cutting or penetrating the skin:

- ▶ Hypodermic needles
- ▶ Intravenous sets
- ▶ Pasteur Pipettes
- ▶ Broken Glass
- ▶ Scalpel blades
- ▶ Various hard plastic items such as intact amniotic membrane perforators and broken plastic pipettes



The following items should **NOT** be disposed of in this collector:

- ▶ **GLOVES**
- ▶ **NON-SHARPS**
- ▶ **PACKAGING**



ALWAYS DISPOSE OF SHARPS & SHARPS SAFETY DEVICES INTO SHARPS COLLECTOR



ALWAYS CLOSE COLLECTOR BEFORE MOVING OR REMOVING



NEVER THROW SHARPS INTO THE COLLECTOR

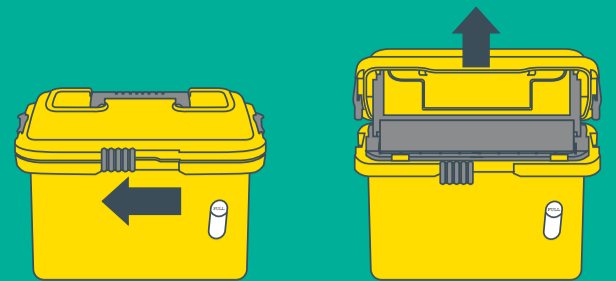


NEVER PUT YOUR HANDS INTO SHARPS COLLECTOR

PLEASE NOTE Daniels Reusable Sharpsmart collectors **DO NOT** go into clinical waste bins



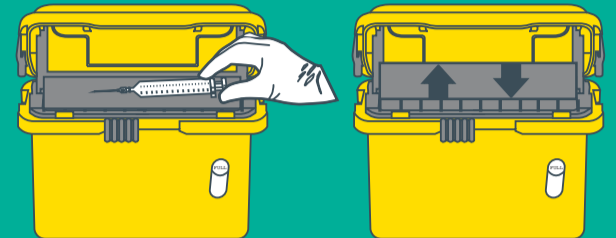
OPEN



1 Slide the front lock to the left.

2 Lift lid until it locks open.

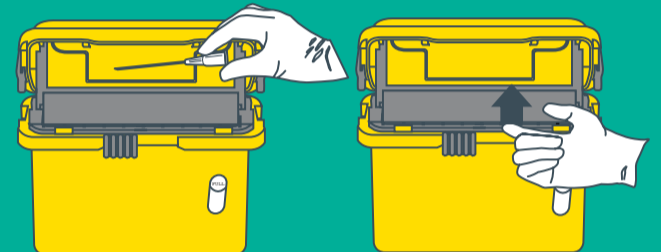
SYRINGE DISPOSAL



1 Drop syringes horizontally onto tray.

2 Tray will empty itself.

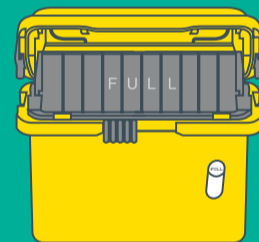
LIGHT SHARPS DISPOSAL



1 Drop syringes horizontally onto tray.

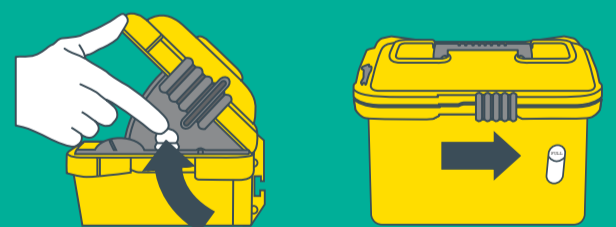
2 Manually lift the tray to empty.

FULL



When the tray remains vertical, the collector is full.

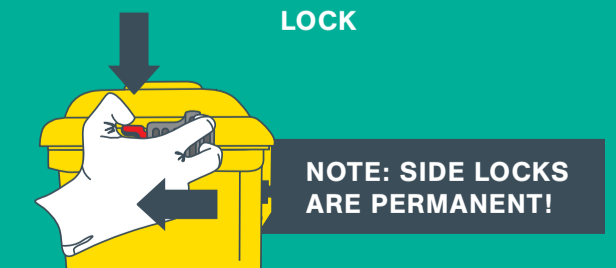
CLOSE



1 Press both side supports inward, and close lid.

2 Slide the front lock fully to the right.

LOCK



1 Depress red tabs.

2 Slide locks completely forward & replace the collector.

NOTE: SIDE LOCKS ARE PERMANENT!